

# LC-MS 1000

Liquid Chromatograph Mass Spectrometer



# LC-MS 1000

## Liquid Chromatograph Mass Spectrometer

### Cost-effective LC-MS solution with top performance



LC-MS 1000 Liquid Chromatograph Mass Spectrometer is a commercial LC-MS system which meets the national standards for LC-MS and for determination of chemicals in food and environment. Our Patented heating technology and nebulizer gas technology help increase vaporization efficiency and background noise while increasing sensitivity. Powerful ChemAnalyst LC-MS chemical workstation software simplifies all operation procedures and advanced networking function enables remote control instrument and view test result

#### Features

- Quick scan speed (maximum 10,000 amu/s, bar chart)
- Wide scan range (10-1100 amu)
- High detection sensitivity
- Auto calibration and tuning function
- LC high pressure pump, auto sampler, thermostat, UV detector, mass spectrum
- control and data process are integrated in the software Wireless vacuum chamber

#### Applications

LC-MS 1000 is a necessary analytical tool for organism analysis lab, drug and food laboratory, production process control, quality control department, etc.





# LC-MS 1000

## Liquid Chromatograph Mass Spectrometer

### Technical Specifications

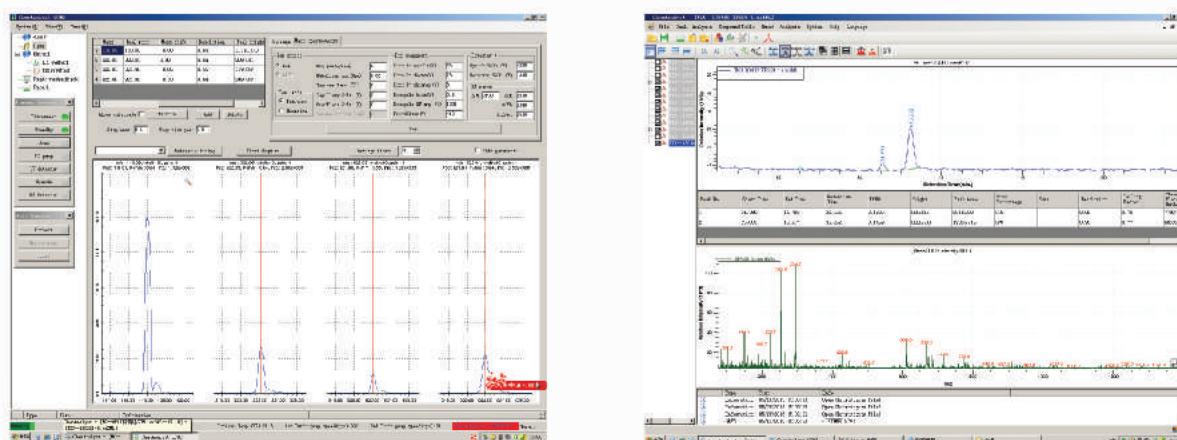
- Mass Range: 10-1500 amu
- Mass accuracy:  $\pm 0.20$  amu (mass calibration range of scan mode)
- Mass axis stability:  $\pm 0.2$ amu/12h (under constant temp. of  $\pm 2^\circ\text{C}$ )
- Scan rate: standard mode: 1000 amu/s, fast scan mode: 10000 amu/s
- Resolution: unit resolution (FWHM<0.7amu)
- SIM signal to noise ratio: ESI, 200 ul/min, SIM
- Peak area Repeatability: RSD 4.6%/0
- Retention time repeatability: RSD



### Advanced Software

Qualitative analysis- Full scan mode for qualitative analysis of target molecules in the sample  
 Quantitative analysis- Selected ion monitoring mode (SIM mode) for quantitative analysis of target molecule  
 With higher detection ability-SIM mode is used to analyze low concentration or low ionization efficiency samples while Full scan mode is able to analyze higher concentration or high ion efficiency unknown sample  
 The multi-channel acquisition function of LC-MS1000 enables to analyze more compounds in a single sample scan. During analysis users can select positive or negative ionization mode, selective ion monitoring (SIM) and full scan mode are or use all modes in a single test, thus greatly improving analysis speed and working efficiency

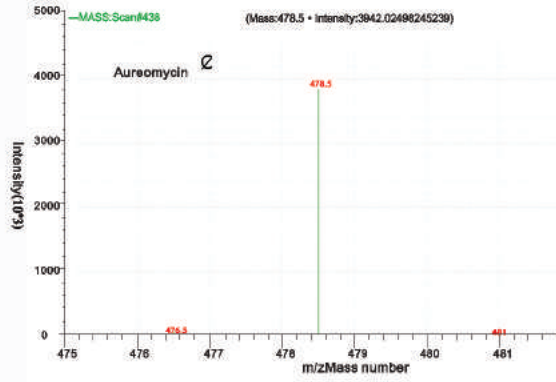
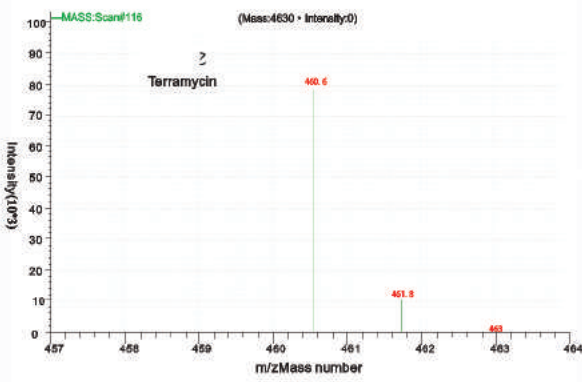
Simple ChemAnalyst Software Interface



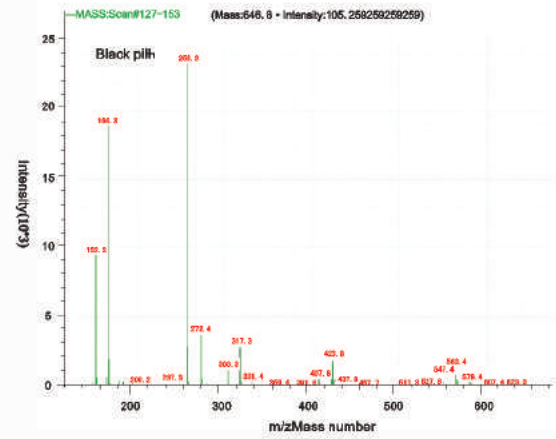
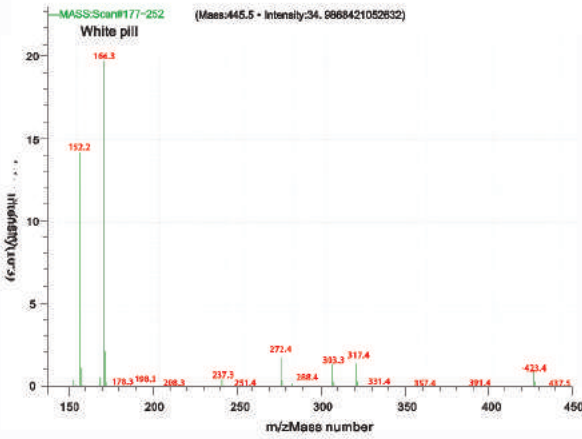
Powerful LC-MS chemical workstation software (chemAnalyst) simplifies all operation procedures from tuning to method set, sampling to qualitative and quantitative data analysis. Advanced networking function enables you to remote control instrument and view test results

## 1. Medicine production monitoring

### A. Antibiotics

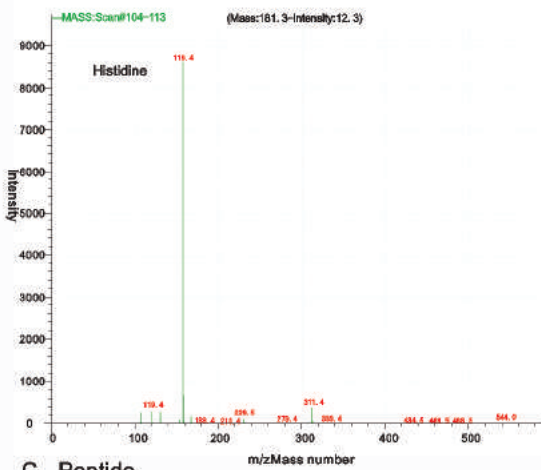


### B. Bufferin

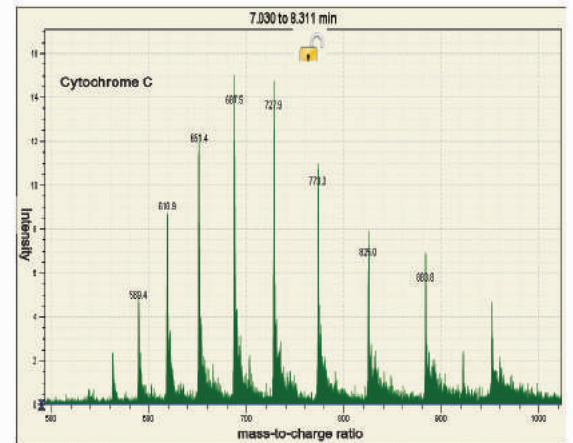


## 2. Biological field

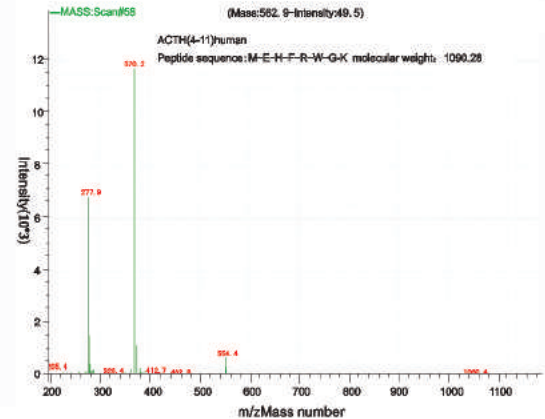
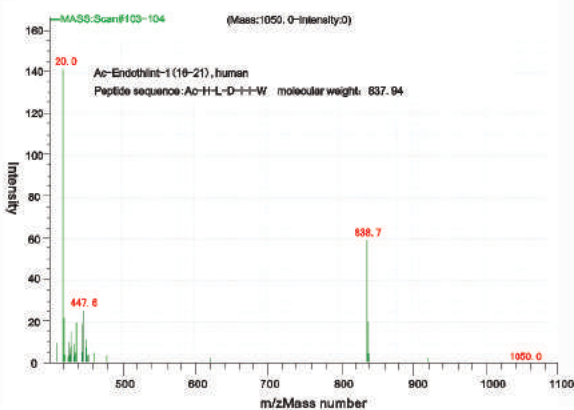
### A. Amino acid



### B. Cytochrome C



### C. Peptide



# Skyray Instruments



Skyray Instruments USA, Inc  
1717 N. Akard Street, Ste 2520  
Dallas, Texas, 75201 USA

+1 972 638 9035  
[www.skyrayinstruments.com](http://www.skyrayinstruments.com)  
[sales@skyrayinstruments.com](mailto:sales@skyrayinstruments.com)

• Spectroscopy • Chromatography • Mass Spectrometry

Skyray Instruments specializes in the R&D, manufacturing and sales of analytical and measuring instruments in Spectroscopy, Chromatography and Mass Spectroscopy fields. Our Products include X-ray Fluorescence Spectrometry, Atomic Absorption Spectrometry, Gas Chromatography, Inductively Coupled Plasma Spectrometry, Mass Spectrometry and many others

Skyray has been providing customers around the world with reliable and affordable Scientific Instruments for more than 20 years